

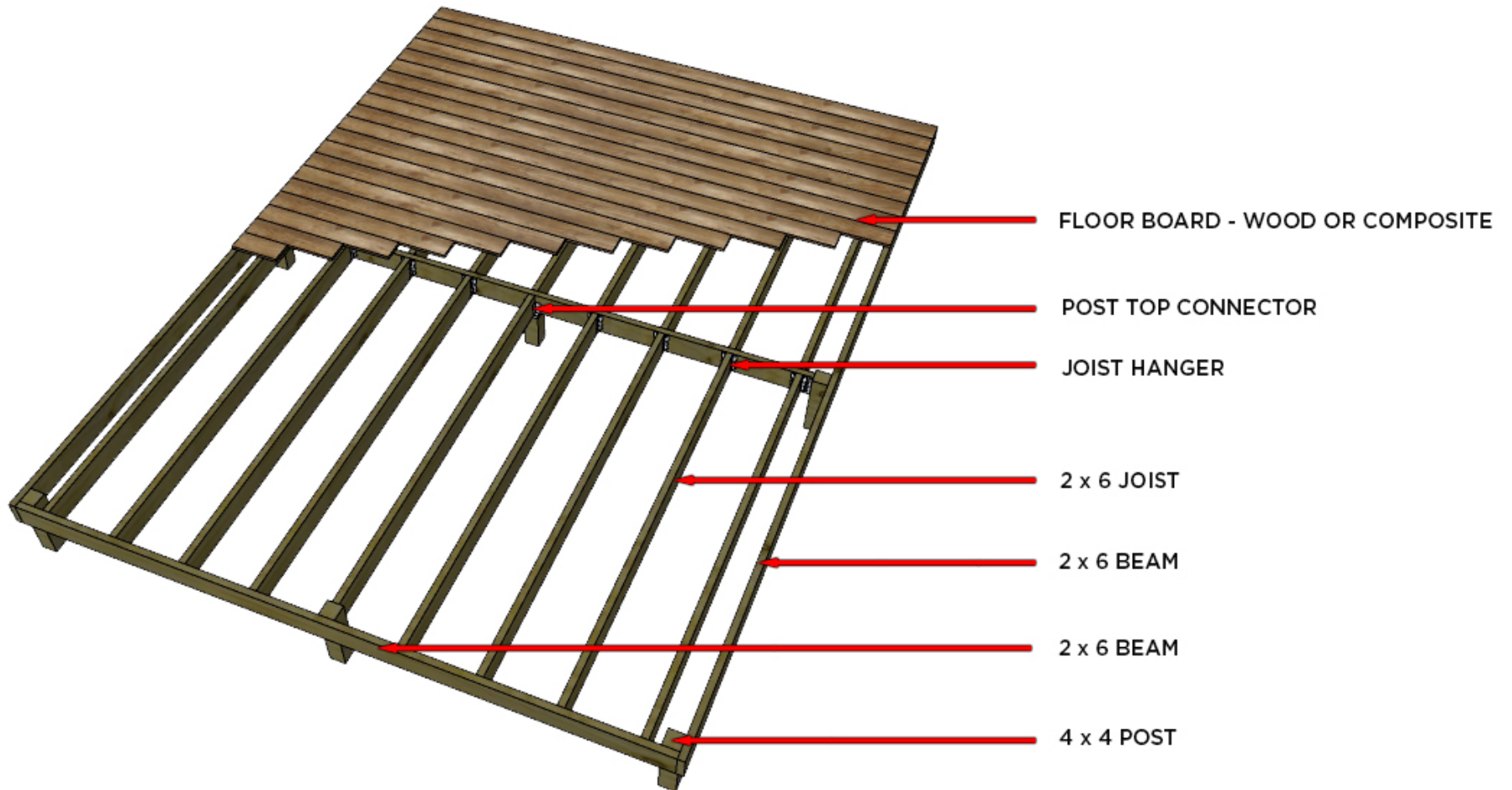


DIAMOND
BRAND EST.
1881

12' x 16' PLATFORM GUIDE




PLATFORM OVERVIEW



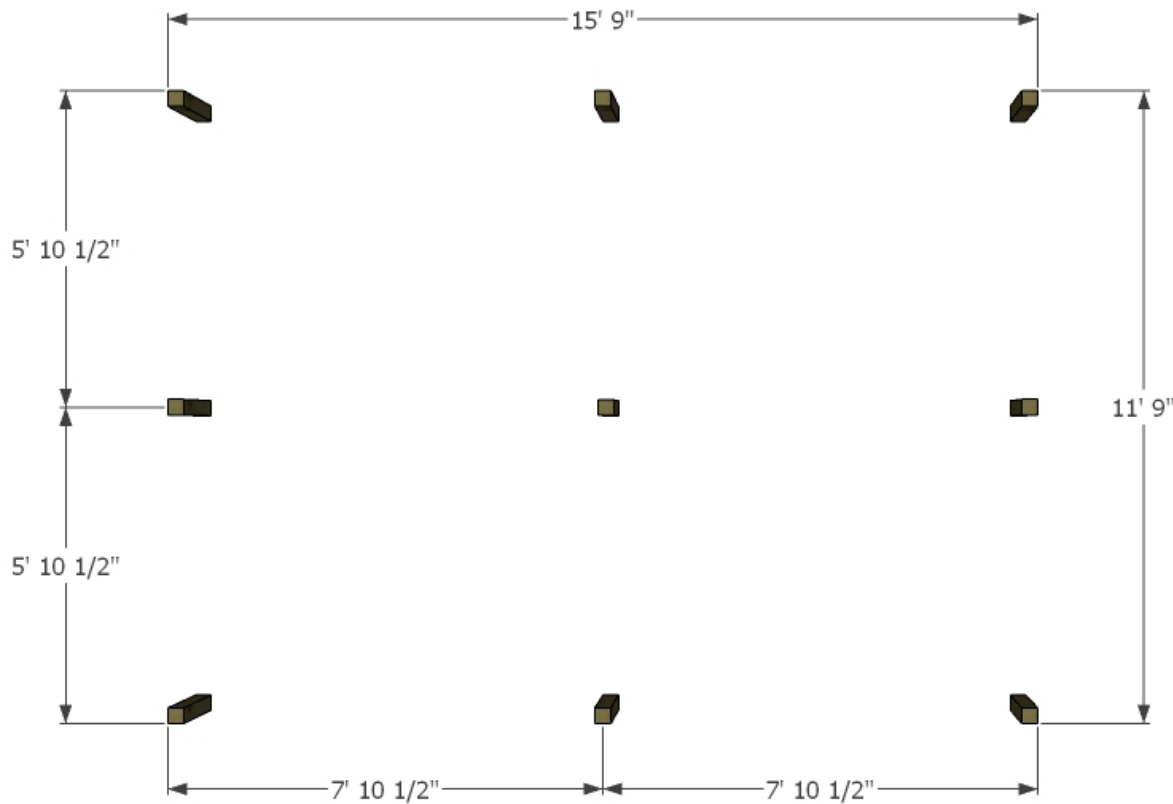


BILL OF MATERIALS

Item #	Description	Material	QTY
	Foundation	A - Flat surface - on grade	
1		4 x 4 post - cut to length	9
2		Gravel fill	1 bag
3		Concrete foundation if more permanent	1 - 2 bags
		B - Sloped surface - Elevated	
4		Concrete Deck Block	9
	Beam and Joist		
5	Beam	2" x 6" x 16'	2
6	Beam	2" x 6" x 12'	3
7	Joist	2" x 6" x 8'	18
	HardWare		
8		Post top Connector - Yardistry YP21012	1
9		Joist Hanger for single 2" x 6"	38
10		Exterior Wood Screws or Nails	1 - 2 box
	Floor		
11		5/4" x 6" x 12' Deck board or Composite Board	36



BUILDING INSTRUCTION



Locate flat surface and mark 12' x 16' area for platform.

Posts need to be set 1 1/2" from outside corners to accommodate beams

Locate Middle Posts per dimension shown on left

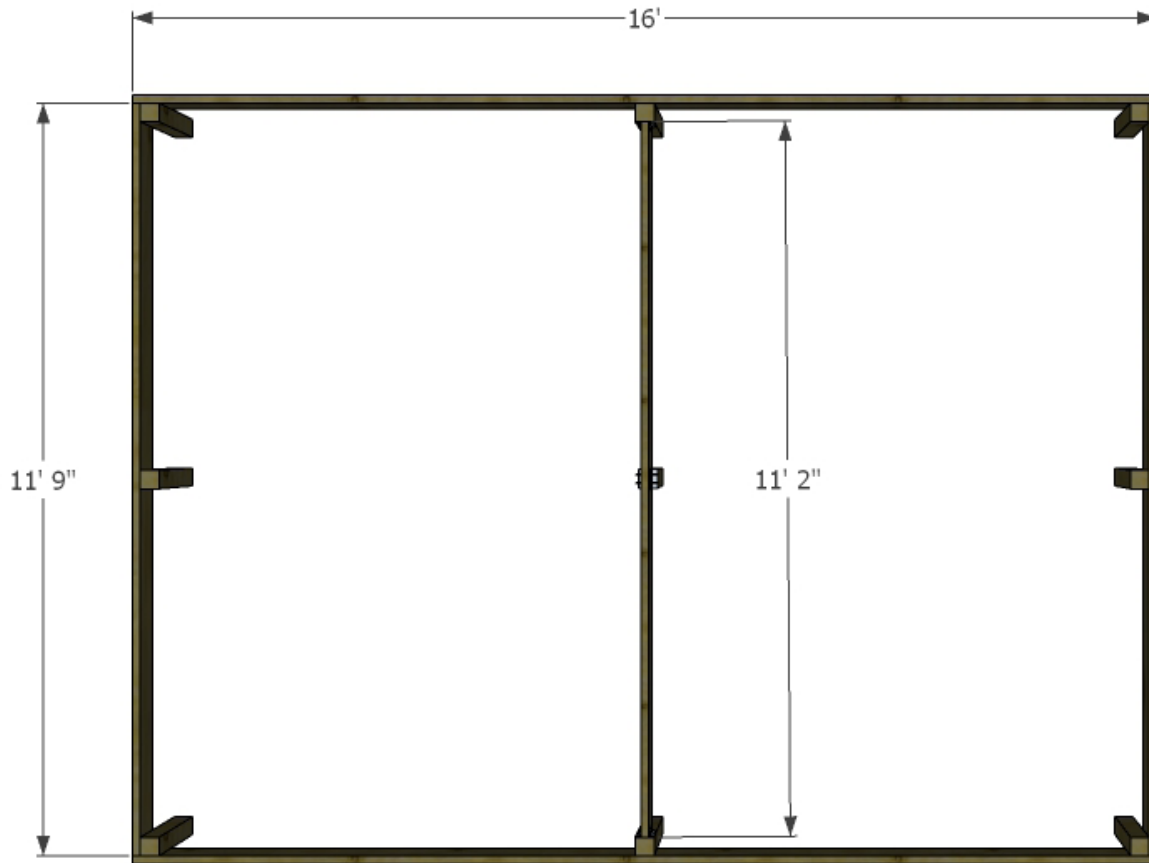
Center Post should be 5 1/2" Shorter than rest of the columns to accommodate center beam which will sit on the post top connector

Once placement for posts are located, dig a hole at least 6" deep

Place the post and fill with gravel for better drainage



BUILDING INSTRUCTION

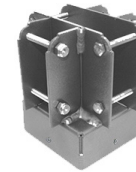


Cut (2) shorter beams at 11'-9"
Cut (2) longer beams at 16'
Cut (1) short center beam at 11'-2"

Screw exterior beams directly into
the post using galvanized wood
screws

Make sure they are level

Place (2) joist hanger inside of
center columns for a short beam



Place 4" x 4" Post Top
Connector on the center
column

Install a short beam on the center
column between the two middle
columns



BUILDING INSTRUCTION



Locate the joist spacing by finding the center of short center beam

Once center is located, place a mark at 16" on center for rest of joists

Place joist hanger on both sides of short center beam where joists will be hung

Place joists in joist hanger and fasten with wood screws

Screw directly from the beam to the joists on exterior side



BUILDING INSTRUCTION



Pressure treated wood deck board or composite deck board can be used

Cut deck boards to 12'

Lay the boards out to ensure all boards fit without having to rip the board - If all boards are uniform 5 1/2" in width, all board should fit on 12' x 16' platform without gaps between the boards

Using screws, fasten the floor boards to the joists



DIAMOND BRAND GEAR

